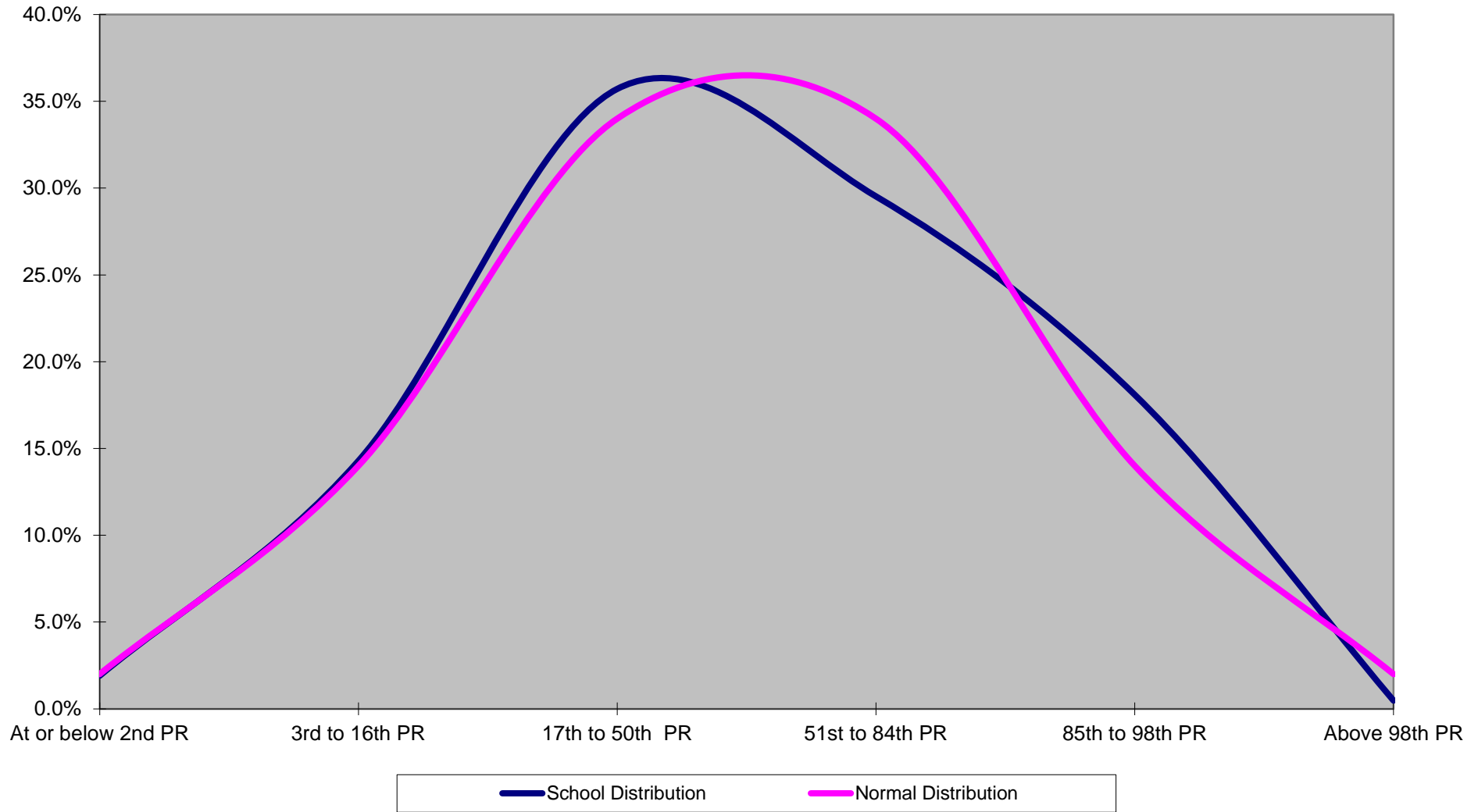


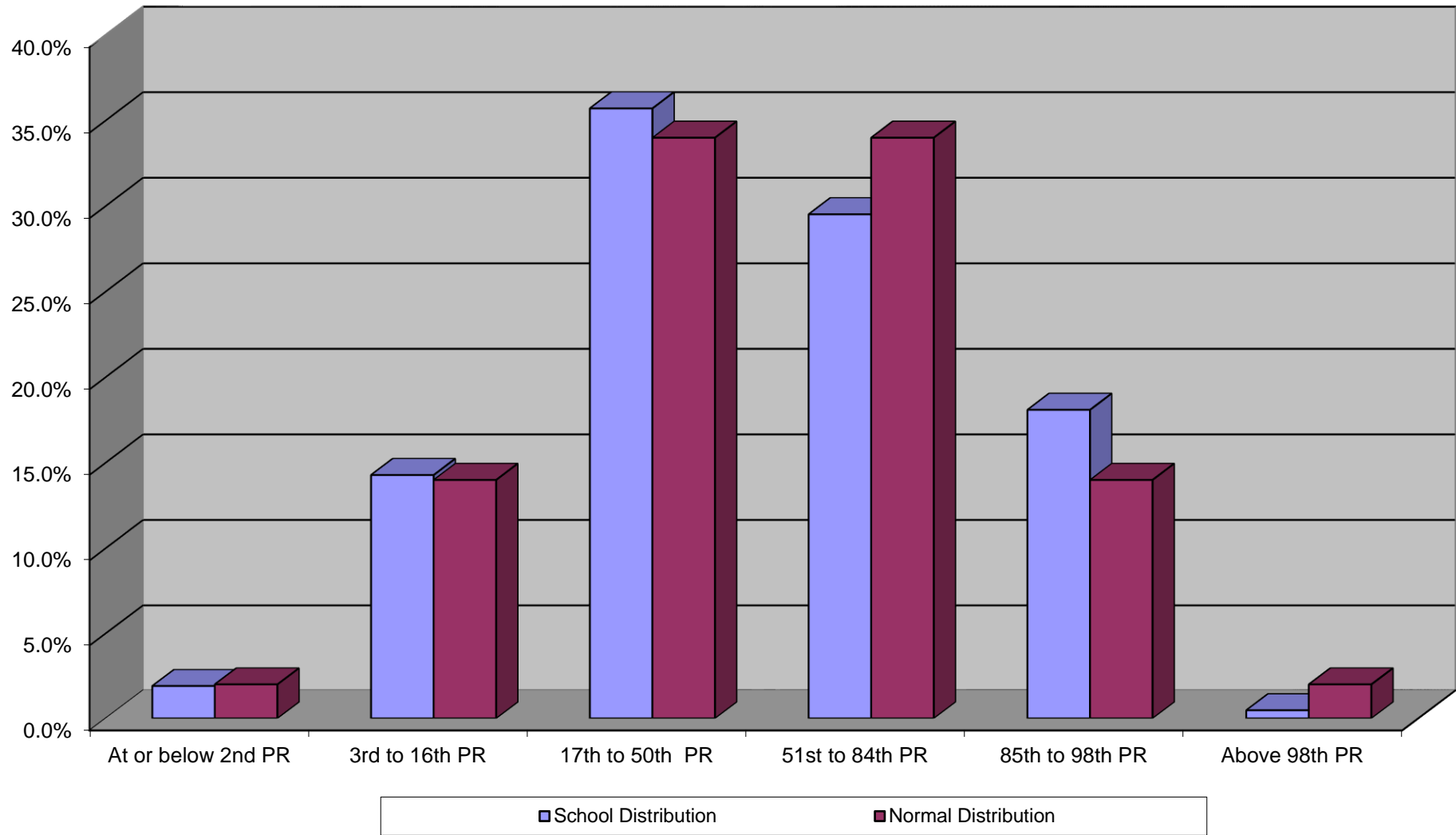
wtownmountkennedy Primary School - DPRT Test Results Date: April 2

	At or below 2nd PR	3rd to 16th PR	17th to 50th PR	51st to 84th PR	85th to 98th PR	Above 98th PR	Total	16th or Below	85th or Above
1st Class	1	5	8	10	10	0	34	17.6%	29.4%
2nd Class	1	7	15	12	11	0	46	17.4%	23.9%
3rd Class	1	4	10	10	2	1	28	17.9%	10.7%
4th Class	0	5	19	10	4	0	38	13.2%	10.5%
5th Class	1	6	8	13	2	0	30	23.3%	6.7%
6th Class	0	3	15	7	9	0	34	8.8%	26.5%
Total	4	30	75	62	38	1	210	16.2%	18.6%
Percentage	1.9%	14.3%	35.7%	29.5%	18.1%	0.5%			
Total Number of Pupils in Each Percentile Band									
	At or below 2nd PR	3rd to 16th PR	17th to 50th PR	51st to 84th PR	85th to 98th PR	Above 98th PR	16th or Below	85% or Above	
Total Num of Pupils	4	30	75	62	38	1	34	39	
Distribution of Pupils Across 4 Percentile Bands									
	16th PR or Below	17th to 50th PR	51st to 84th PR	85th - 100th PR					
Total Num of Pupils	34	75	62	39					
Percentage	16.2%	35.7%	29.5%	18.6%					
Percentage of Pupils in Each Percentile Band									
	At or below 2nd PR	3rd to 16th PR	17th to 50th PR	51st to 84th PR	85th to 98th PR	Above 98th PR	16th or Below	85th or Above	
School Distribution	1.9%	14.3%	35.7%	29.5%	18.1%	0.5%	16.2%	18.6%	
Normal Distribution	2.0%	14.0%	34.0%	34.0%	14.0%	2.0%	16.0%	16.0%	

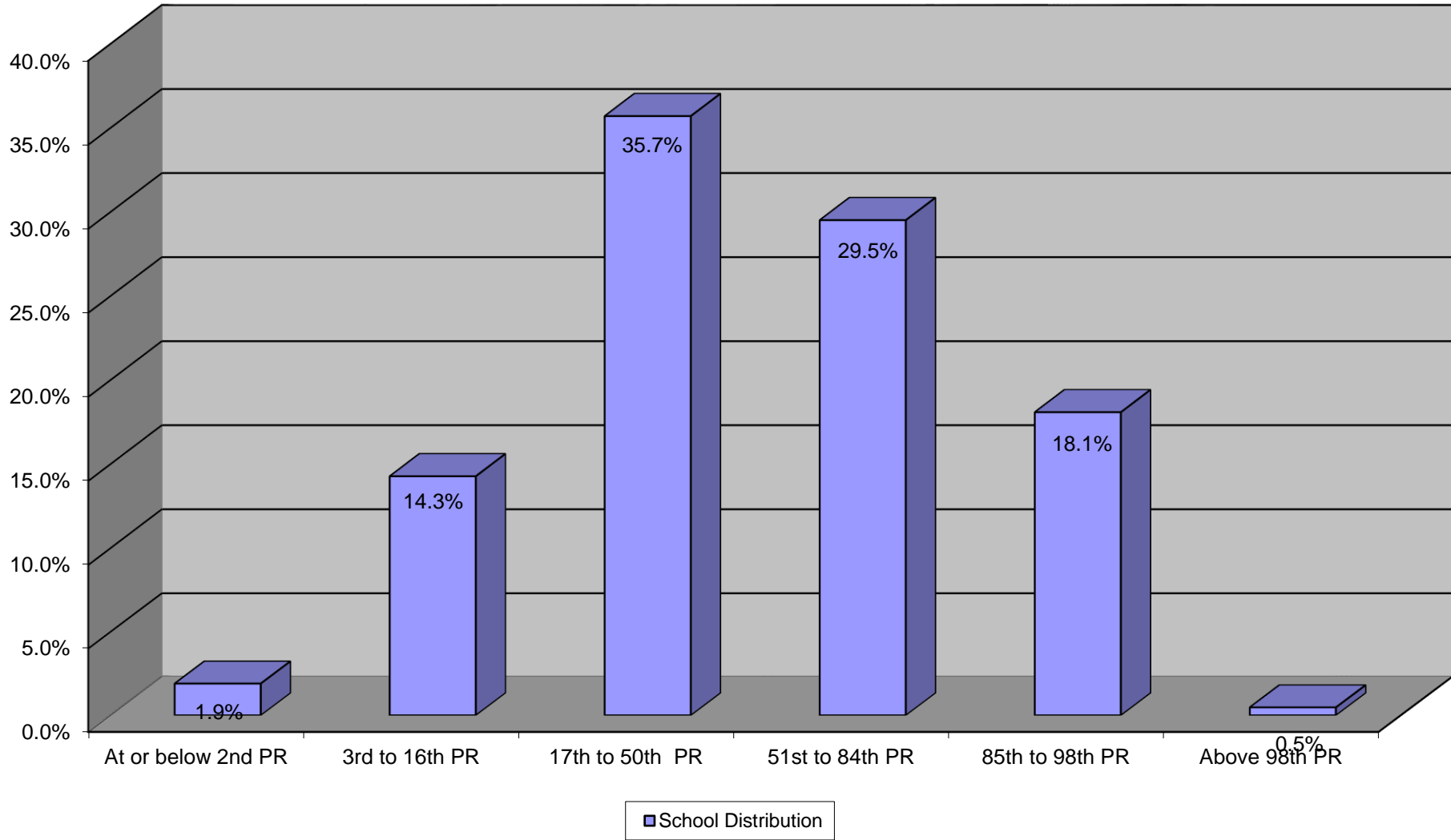
Test Results Compared with Normal Distribution



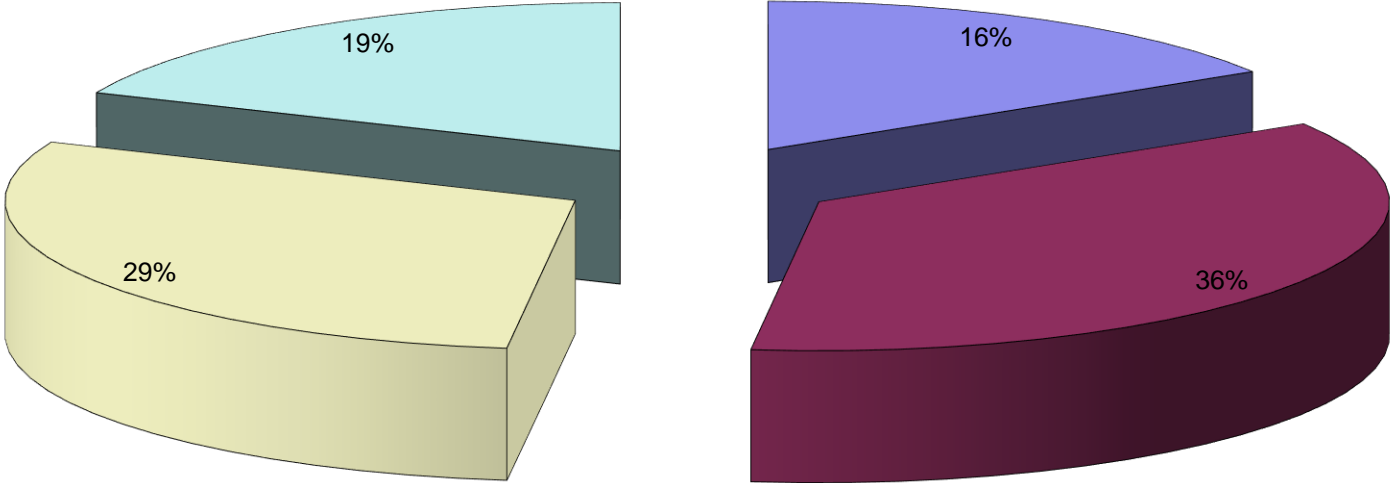
Comparison with Normal Distribution



% of Pupils in Each Percentile Band

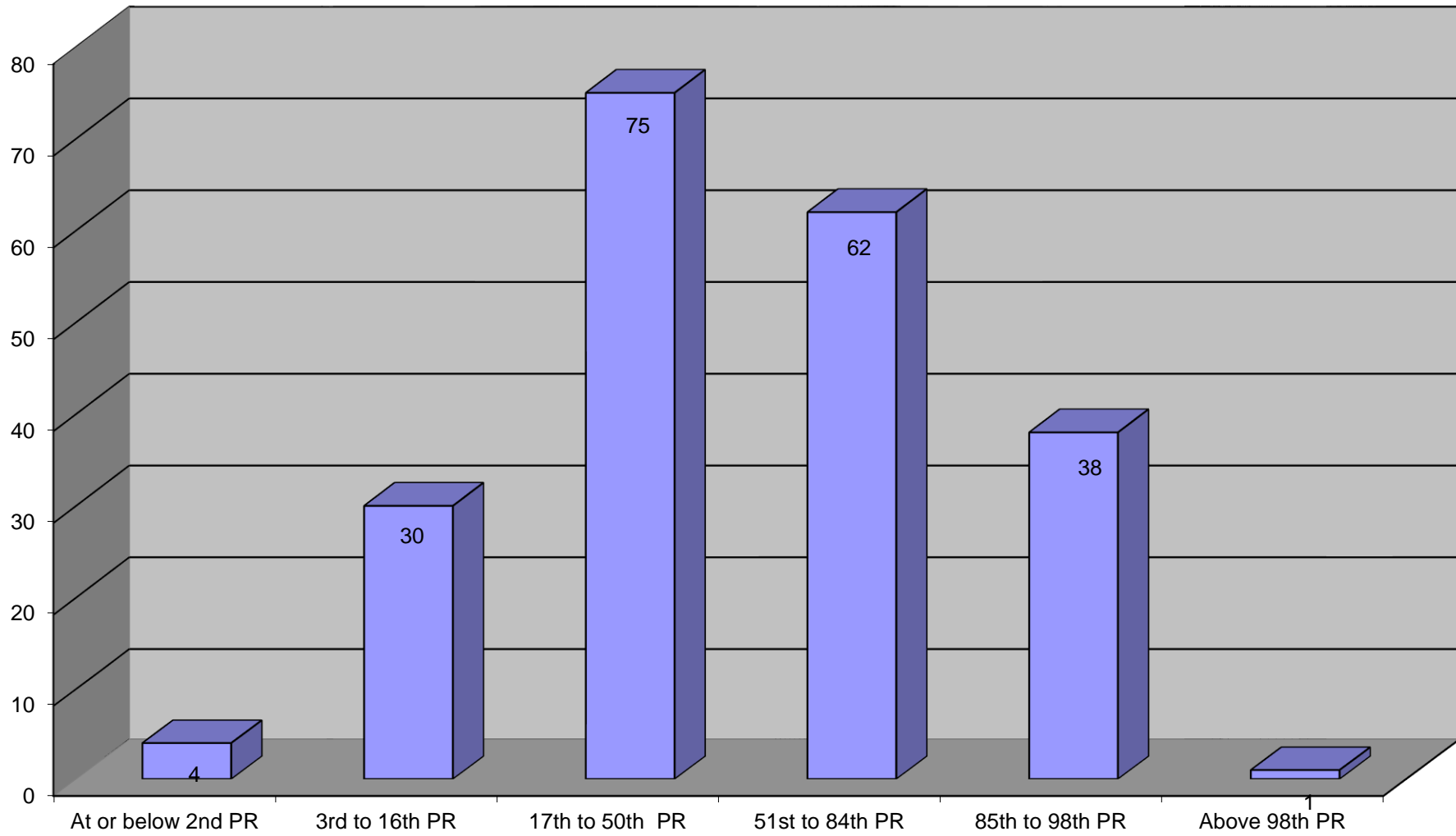


Distribution of Pupils Across 4 Percentile Bands



■ 16th PR or Below	■ 17th to 50th PR	■ 51st to 84th PR	■ 85th - 100th PR
--------------------	-------------------	-------------------	-------------------

Total Num of Pupils in Each Percentile Band



Distribution of Pupils in Each Class

