

# Wtownmountkennedy Primary School - DPMT Test Results Date: April 2

	At or below 2nd PR	3rd to 16th PR	17th to 50th PR	51st to 84th PR	85th to 98th PR	Above 98th PR	Total	16th or Below	85th or Above
1st Class	5	9	12	5	2	2	35	40.0%	11.4%
2nd Class	1	14	22	7	2	0	46	32.6%	4.3%
3rd Class	2	5	8	10	4	0	29	24.1%	13.8%
4th Class	1	6	17	12	1	0	37	18.9%	2.7%
5th Class	1	9	12	5	3	0	30	33.3%	10.0%
6th Class	0	8	13	9	4	0	34	23.5%	11.8%
<b>Total</b>	<b>10</b>	<b>51</b>	<b>84</b>	<b>48</b>	<b>16</b>	<b>2</b>	<b>211</b>	<b>28.9%</b>	<b>8.5%</b>
<b>Percentage</b>	<b>4.7%</b>	<b>24.2%</b>	<b>39.8%</b>	<b>22.7%</b>	<b>7.6%</b>	<b>0.9%</b>			

## Total Number of Pupils in Each Percentile Band

	At or below 2nd PR	3rd to 16th PR	17th to 50th PR	51st to 84th PR	85th to 98th PR	Above 98th PR	16th or Below	85% or Above
Total Num of Pupils	10	51	84	48	16	2	61	18

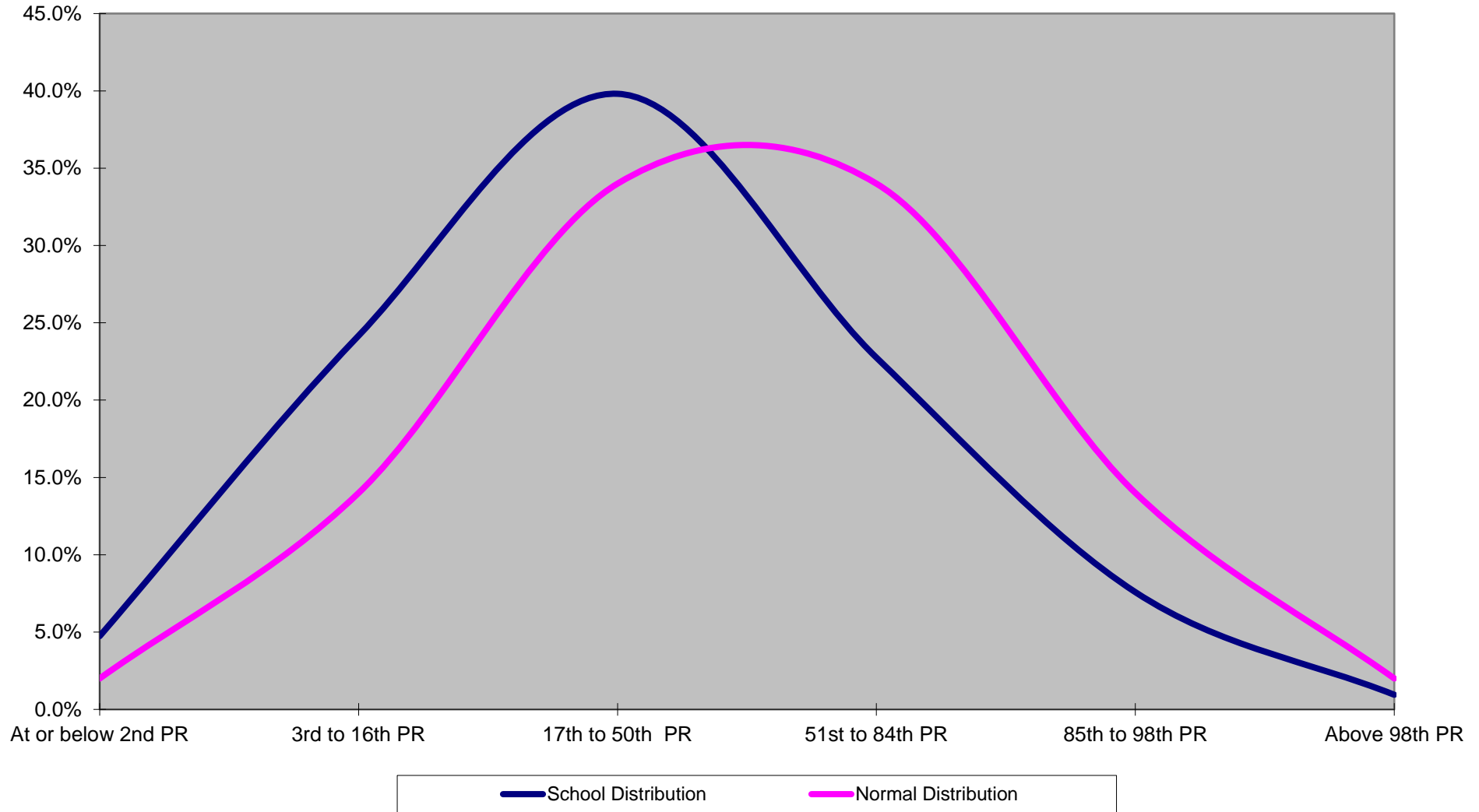
## Distribution of Pupils Across 4 Percentile Bands

	16th PR or Below	17th to 50th PR	51st to 84th PR	85th - 100th PR
Total Num of Pupils	61	84	48	18
Percentage	28.9%	39.8%	22.7%	8.5%

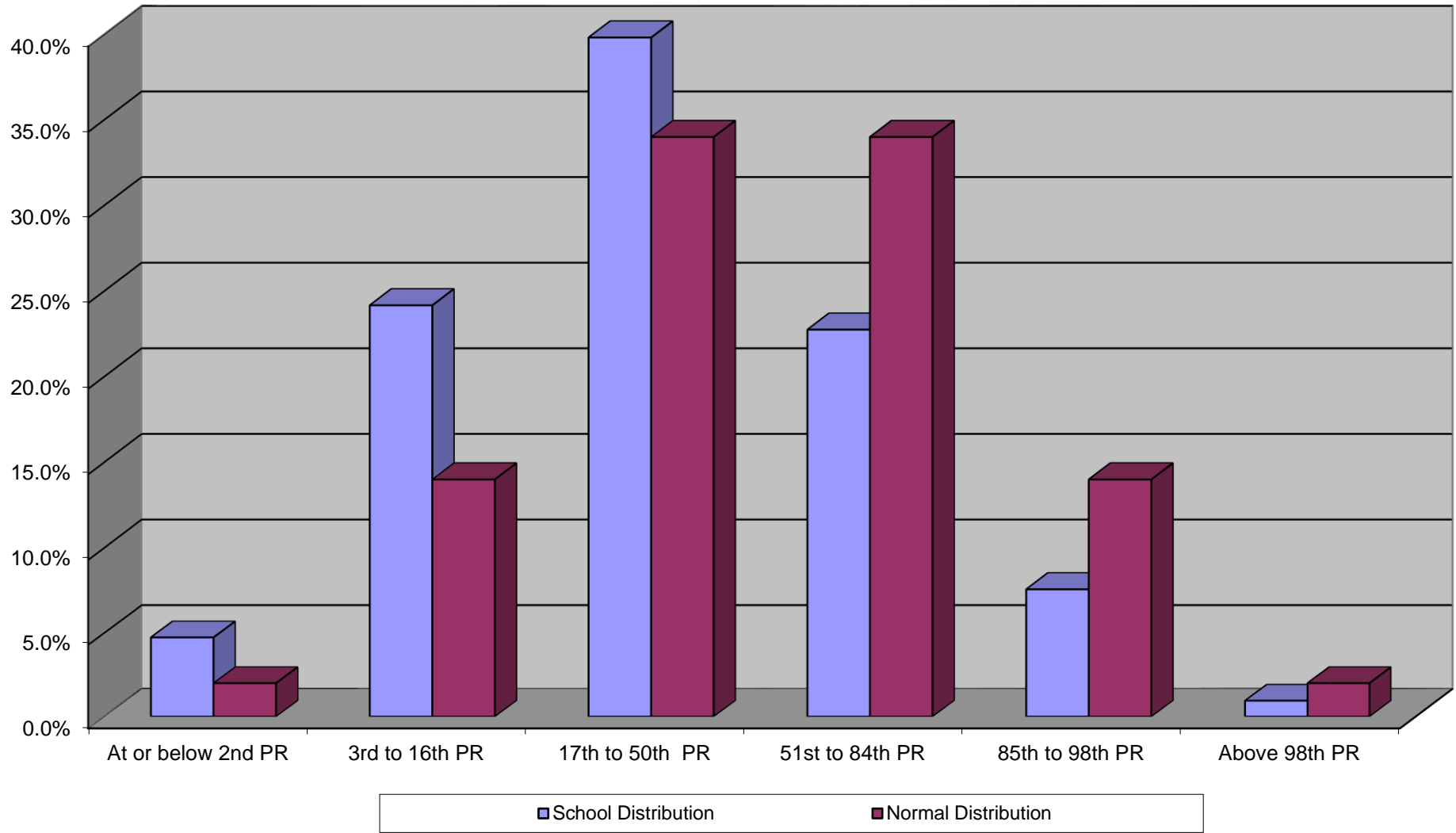
## Percentage of Pupils in Each Percentile Band

	At or below 2nd PR	3rd to 16th PR	17th to 50th PR	51st to 84th PR	85th to 98th PR	Above 98th PR	16th or Below	85th or Above
<b>School Distribution</b>	4.7%	24.2%	39.8%	22.7%	7.6%	0.9%	28.9%	8.5%
<b>Normal Distribution</b>	2.0%	14.0%	34.0%	34.0%	14.0%	2.0%	16.0%	16.0%

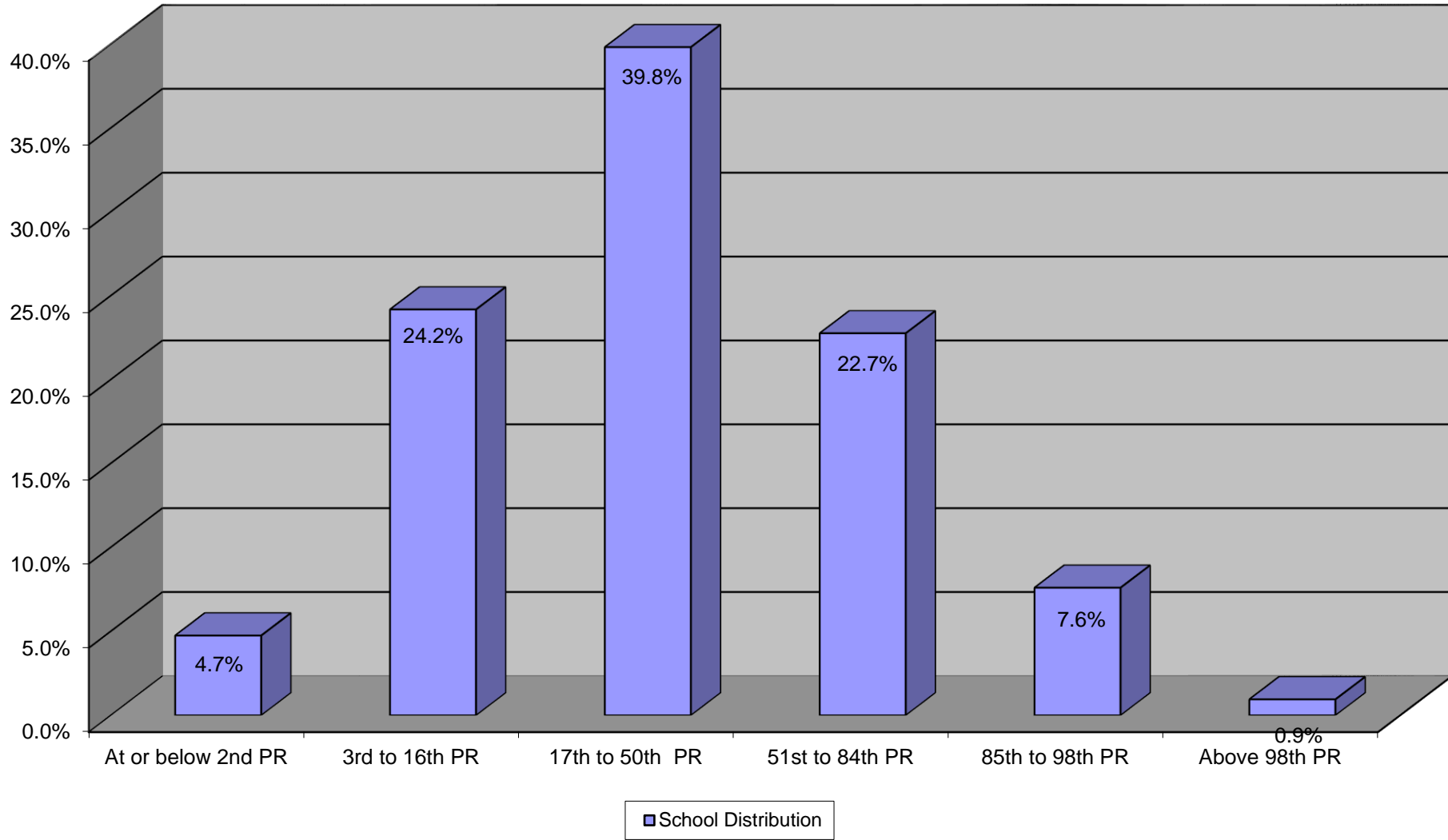
## Test Results Compared with Normal Distribution



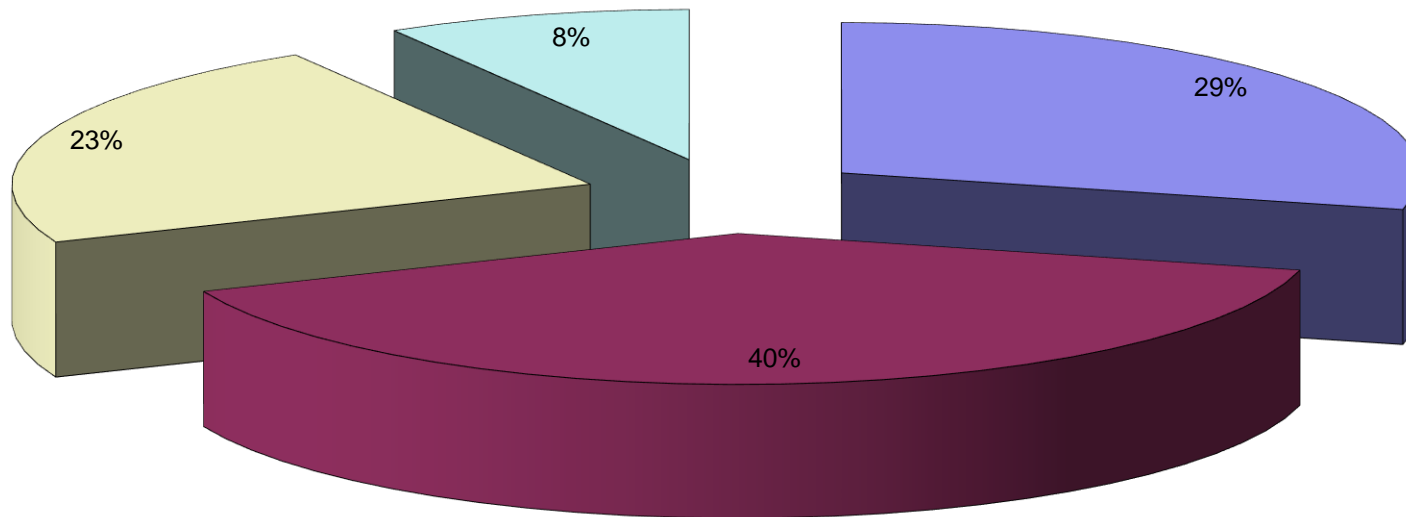
### Comparison with Normal Distribution



**% of Pupils in Each Percentile Band**



## Distribution of Pupils Across 4 Percentile Bands



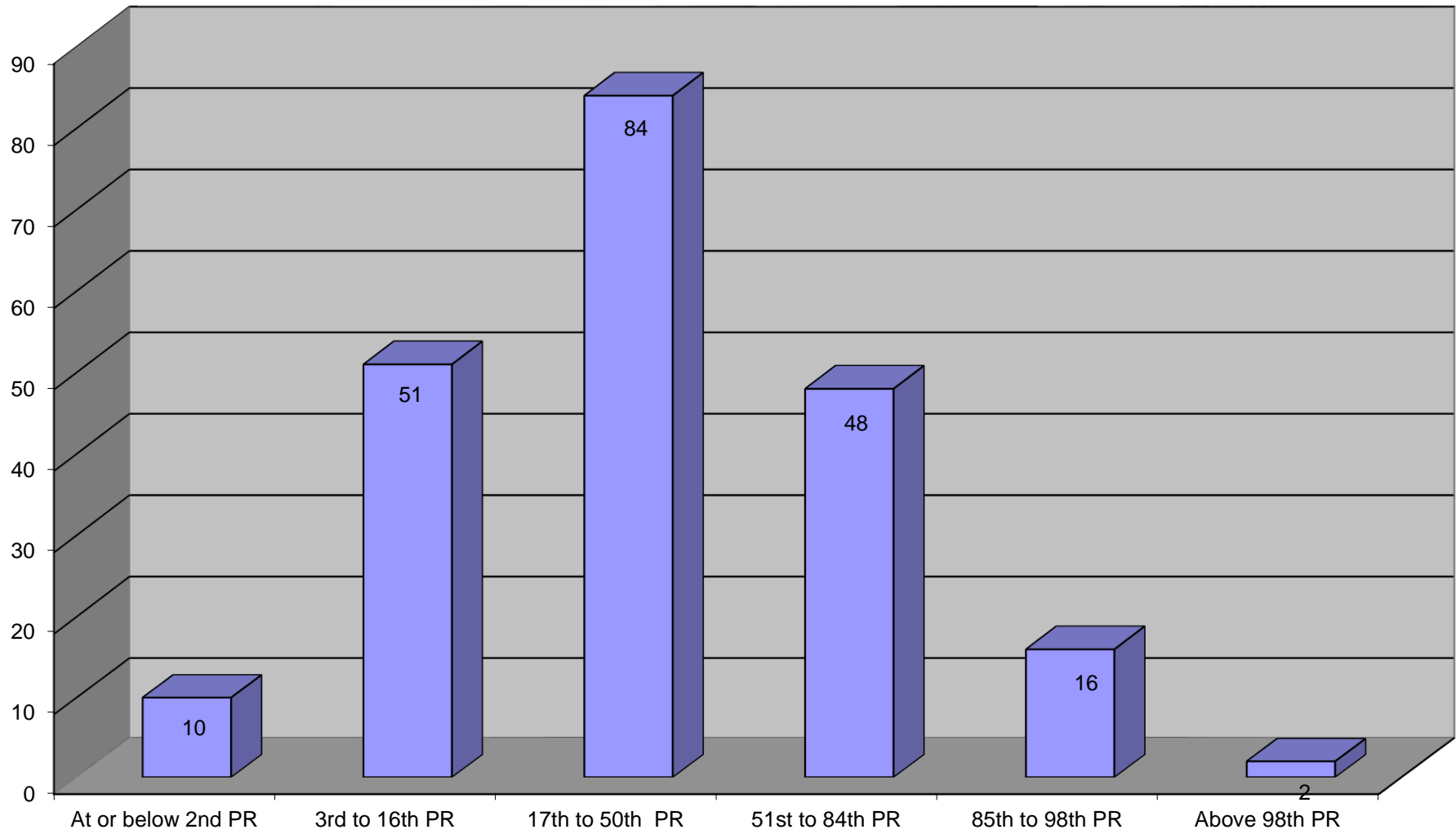
■ 16th PR or Below

■ 17th to 50th PR

■ 51st to 84th PR

■ 85th - 100th PR

**Total Num of Pupils in Each Percentile Band**



## Distribution of Pupils in Each Class

